

KAWA CHORD 2

Quick Start

Index

| | |
|--|----|
| 1.How To install (Windows)..... | 2 |
| 1.1 Install the VST3 Plugin..... | 2 |
| Windows 64bit..... | 2 |
| Windows 32bit..... | 2 |
| 1.2 Install the VST 2.4 Plugin..... | 2 |
| Windows 64bit..... | 2 |
| Windows 32bit..... | 2 |
| 2.How To install (Mac OSX)..... | 3 |
| 2.1 How to Install the VST2.4 Plugin..... | 3 |
| 2.2 How to Install the VST3 Plugin..... | 3 |
| 2.3 How To Install Audio Unit..... | 3 |
| 3.How to activate KawaChord 2..... | 4 |
| 3.1 Generate Plugin Key..... | 4 |
| 3.2 Register Plugin key to Kawa.works Account..... | 4 |
| 3.3 Dowload License Key..... | 5 |
| 3.4 Register LicenseKey to Plugin..... | 5 |
| 4.Quick Start Studio One..... | 6 |
| 4.1 Load KawaChord 2..... | 6 |
| 4.2 Configure Midi send / receive setting..... | 6 |
| 4.3 Plcaing As MIDI Clip Item..... | 7 |
| 5.Quick Start BitWig Studio..... | 8 |
| 5.1 Load KawaChord 2..... | 8 |
| 5.2 Load the synthesizer you want to use..... | 8 |
| 5.3 Placing As MIDI Clip Item..... | 9 |
| 6.Quick Start for Reaper..... | 10 |
| 6.1 Load KawaChord 2..... | 10 |
| 6.2 Load the synthesizer you want to use..... | 10 |
| 6.3 Placing As MIDI Clip Item..... | 11 |
| 7.Quick Start for Logic (Mac OS X)..... | 12 |
| 7.1 Load KawaChord 2 as Midi Effect Plugin..... | 12 |
| 7.2 Placing As MIDI Clip Item..... | 13 |

1. How To install (Windows)

KawaChord 2 doesn't have its Installer. For the installation, you need to move "KawaChord 2 plugin file" to VST folder manually

1.1 Install the VST3 Plugin

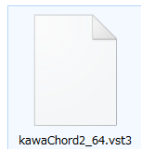
Windows 64bit

Move **kawaChord2_64.vst3** (Free version is **kawaChord2_Free_64.vst3**) to C:\Program Files\Common Files\VST3\kawaChord2 64.vst3 directory.

Windows 32bit

Move **kawaChord2_32.vst3** (Free version is **kawaChord2_Free_32.vst3**) to C:\Program Files (x86)\Common Files\VST3\kawaChord2 64.vst3 directory.

※ If you use window 32 bit OS, move to C:\Program Files\Common Files\VST3\kawaChord2 64.vst3 directory.



Move To "VST3" Folder

1.2 Install the VST 2.4 Plugin

Windows 64bit

Move **kawaChord2_vst2_64.dll** (Free version is **kawaChord2_vst2_Free_64.dll**) to vstPlugins Folder whose location was settled by your DAW.

Windows 32bit

Move **kawaChord2_vst2_Free_32.dll** (Free version is **kawaChord2_vst2_Free_32.dll**) to vstPlugins Folder whose location was settled by your DAW.

※ the folder in which KawaChord2 is installed depends on DAWs. Mostly it's located at C:\Program Files (x86)\VSTPlugins.

2. How To install (Mac OSX)

KawaChord 2 doesn't have its Installer. For the installation, you need to move "KawaChord 2 plugin file" to VST folder manually

2.1 How to Install the VST2.4 Plugin.

Move **"kawaChord2-MacOSX.vst"** (Free version is **"kawaChord2-MacOSX-Free.vst"**) to ~/Library/Audio/Plug-Ins/VST directory. (or Macintosh HD/Library/Audio/Plug-Ins/VST directory)

2.2 How to Install the VST3 Plugin.

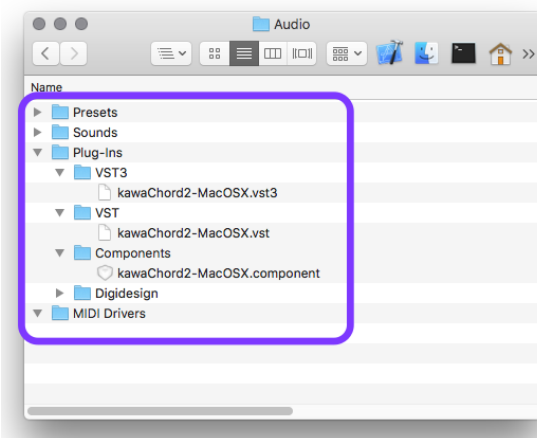
Move **"kawaChord2-MacOSX.vst3"** (Free version is **"kawaChord2-MacOSX-Free.vst3"**) to ~/Library/Audio/Plug-Ins/VST3 directory. (or Macintosh HD/Library/Audio/Plug-Ins/VST3 directory)

※If you use the Library folder frequently you can add it to your Sidebar like this:

1. Hold down the **Option key** and open the **Go** menu in the Finder.
2. Select **Library** from the list of places.

2.3 How To Install Audio Unit

Move **"kawaChord2-MacOSX.component"** (Free version is **"kawaChord2-MacOSX-Free.component"**) to ~/Library/Audio/Plug-Ins/Component directory.
(or Macintosh HD/Library/Audio/Plug-Ins/Component directory)



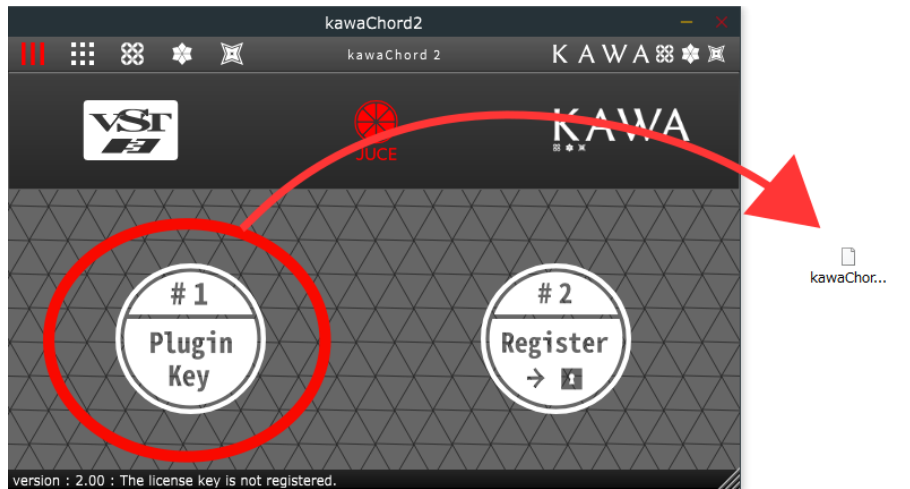
(Figure)

when Installed plugins to
"~/Library/Audio/Plug-Ins" directory.

3. How to activate KawaChord 2.

In order to use KawaChord 2, License activation is required. In this section, the activation will be explained.

3.1 Generate Plugin Key



when you start KawaChord for the first time, you are urged to activate it. Click the left button"#1" to generate a plugin key.

3.2 Register Plugin key to Kawa.works Account.

KAWA CHORD 2

- Account Dashboard
- Account Information
- Address Book
- My Downloadable Products**
- My Orders
- Stored Payment Methods
- Billing Agreements
- My Product Reviews

| Order # | Date | Title | Status | Remaining Downloads |
|----------------|--------------|--|--|----------------------------|
| 170516-151340f | May 16, 2017 | kawaChord2-Free-windows Download | Available | Unlimited |
| | | <div style="display: flex; align-items: center;"> <div style="border: 1px solid #ccc; padding: 2px 5px;">ファイルを選択</div> <div style="margin-left: 5px;">選択されていません</div> </div> | <div style="border: 1px solid #ccc; padding: 2px 5px;">Register Plugin Key</div> | Remaining Register Count 3 |
| 170516-11253ba | May 16, 2017 | kawaChord2-Free-windows Download | Available | Unlimited |
| | | <div style="border: 1px solid #ccc; padding: 2px 5px;">Download License Key</div> | | Remaining Register Count 0 |

Register the plugin key in "My Downloadable Products" on your <http://kawa.works> account.

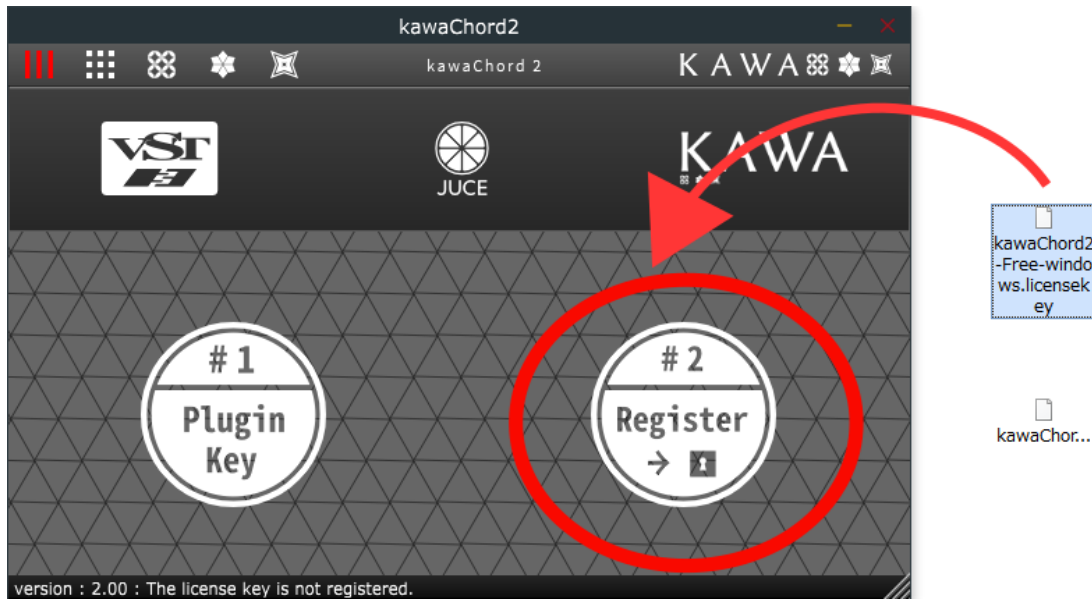
3.3 Dowload License Key

| Order # | Date | Title | Status | Remaining Downloads |
|----------------|--------------|--|------------------------------------|----------------------------|
| 170516-151340f | May 16, 2017 | kawaChord2-Free-windows Download | Available | Unlimited |
| | | Download License Key | Remove License Key | Remaining Register Count 2 |
| 170516-11253ba | May 16, 2017 | kawaChord2-Free-windows Download | Available | Unlimited |
| | | Download License Key | | Remaining Register Count 0 |

2 Item(s)

if the plugin key is registered properly, you can download the license key.

3.4 Register LicenseKey to Plugin.



Register the downloaded license key with the plugin by clicking the "Register button" on the right.

- Vst 2.4 and Vst 3 plugins are required to activate respectively but you can use the same license key.
- When you installed both "Free version" and "Commercial version", There may be cases where only one of them is recognized. When installing the commercial version, please move the free version to another place once or delete it before trying the installation.
- Please check the difference between similar name ".licensekey" and ".pluginKey".

4. Quick Start Studio One

QuickStart guide of KawaChord on Studio One.

4.1 Load KawaChord 2

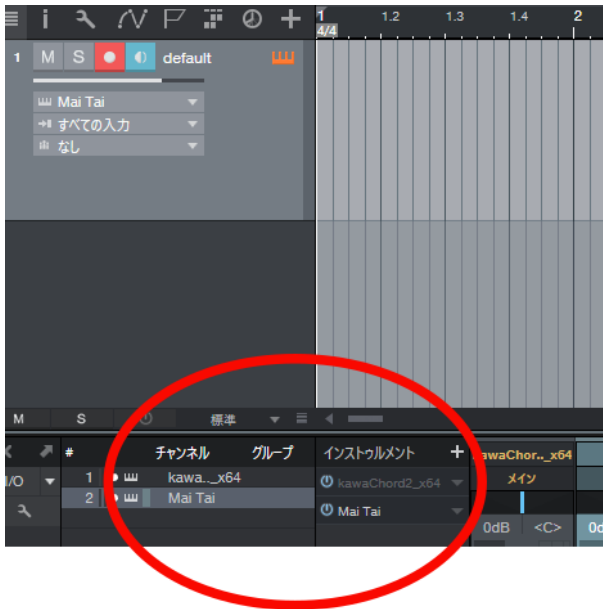
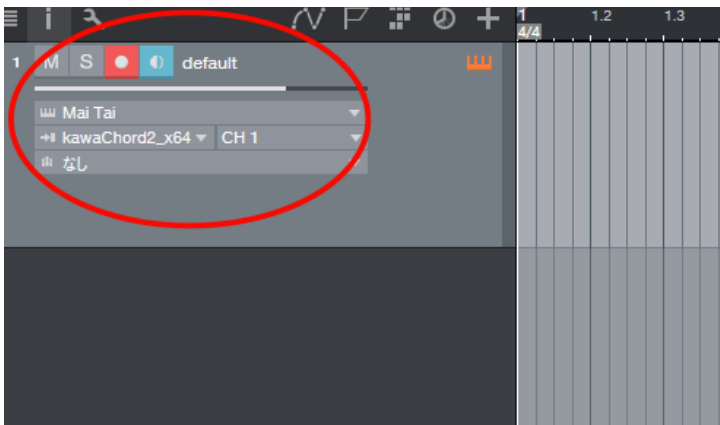


Image of loading "KawaChord 2 and "Studio One Maitai" synthesizer.

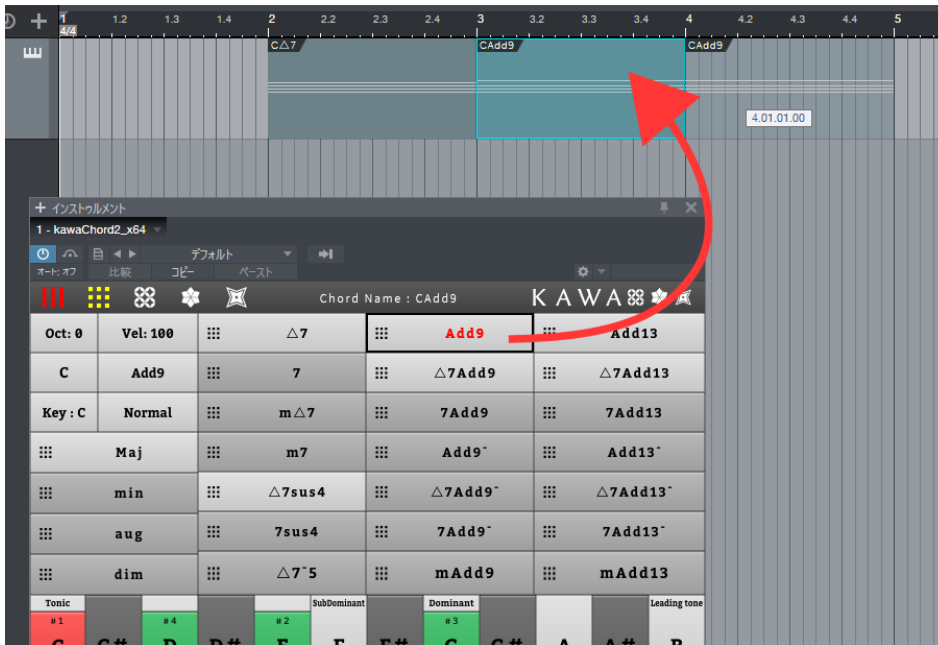
4.2 Configure Midi send / receive setting.



Select Maitai Synthesizer's MIDI input as KawaChord 2. By doing that, Maitai is assigned to the output of KawaChord 2 and Maitai can receive MIDI notes from KawaChord 2.

4.3 Placing As MIDI Clip Item

you can put MIDI items on tracks by dragging each Chord Name Buttons while pressing the "ModifierKey 1". (How to setting "ModifierKey 1", Please see ["Modifier Key Setting"](#) section.)



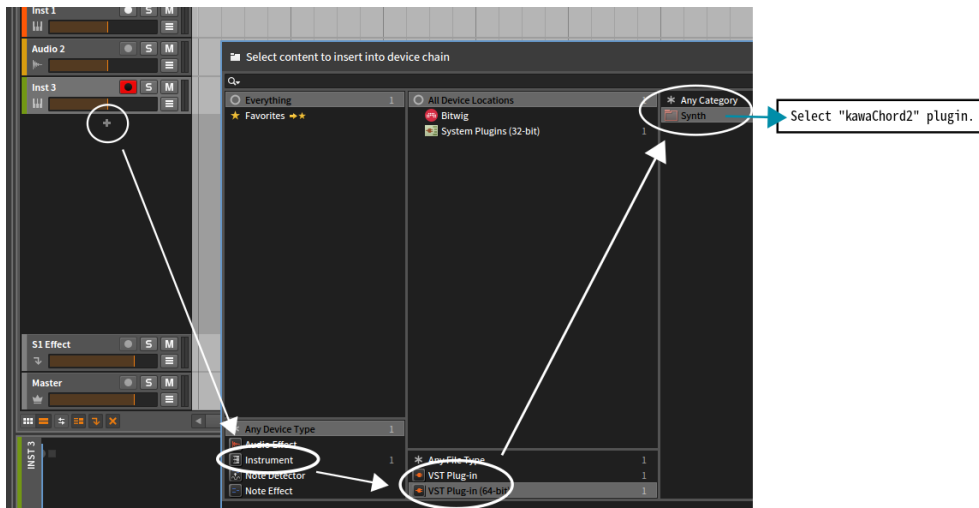
※ As of today(Aug 5th, 2017), this function has been confirmed with the following Host applications: Studio One, Reaper, Logic and Bitwig Studio .



5. Quick Start BitWig Studio

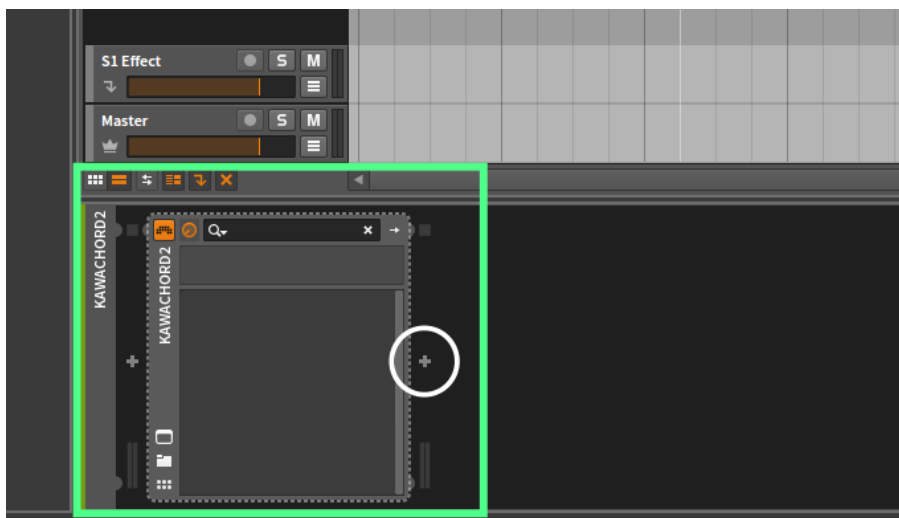
QuickStart guide of KawaChord on BitWig Studio.

5.1 Load KawaChord 2



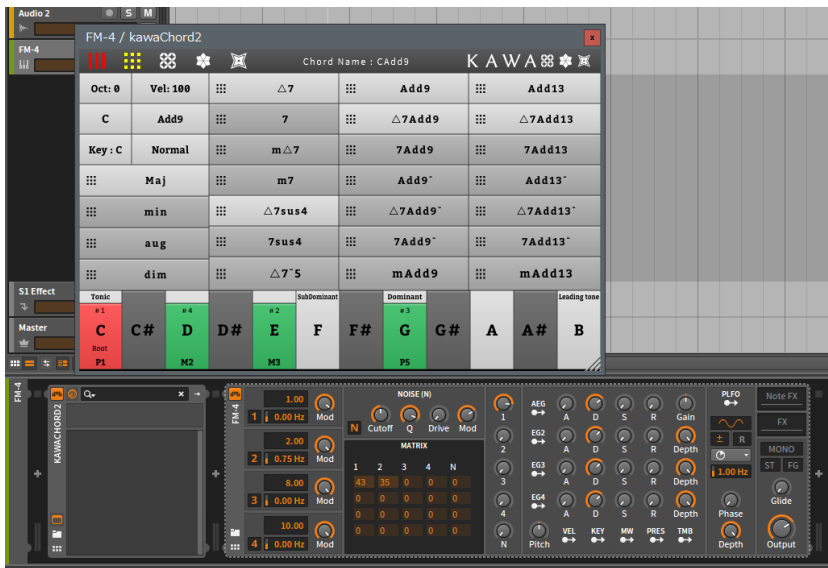
press "+" button below the track and then select "Instrument"→"VST plugin(64 bit)"→"KawaChord 2."

5.2 Load the synthesizer you want to use.



Click the right side of KawaChord 2 "+" and then select an instrument as a MIDI notes' output

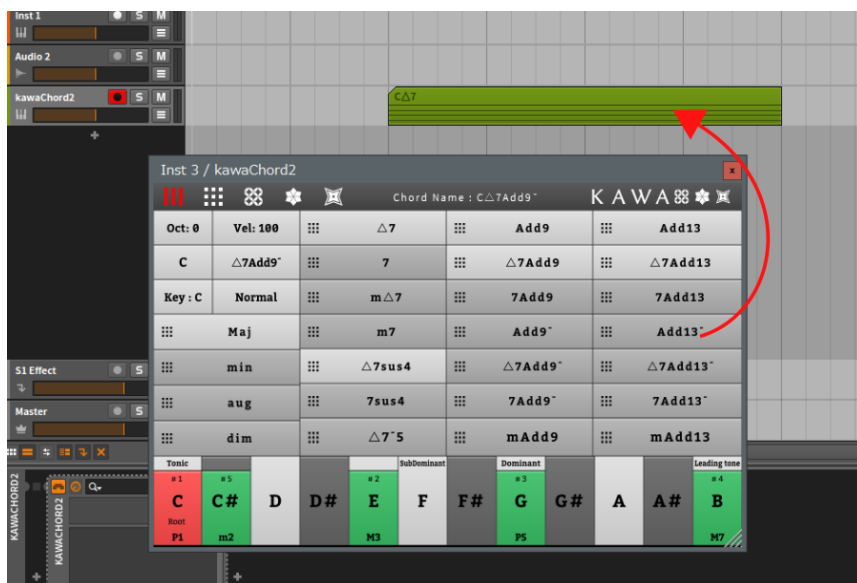
destination.



The pic: Bitwig FM4 Synthesizer is assigned as a MIDI notes output destination. With that, the FM Synthesizer sounds when KawaChord 2's Chord Name Buttons are clicked.

5.3 Placing As MIDI Clip Item

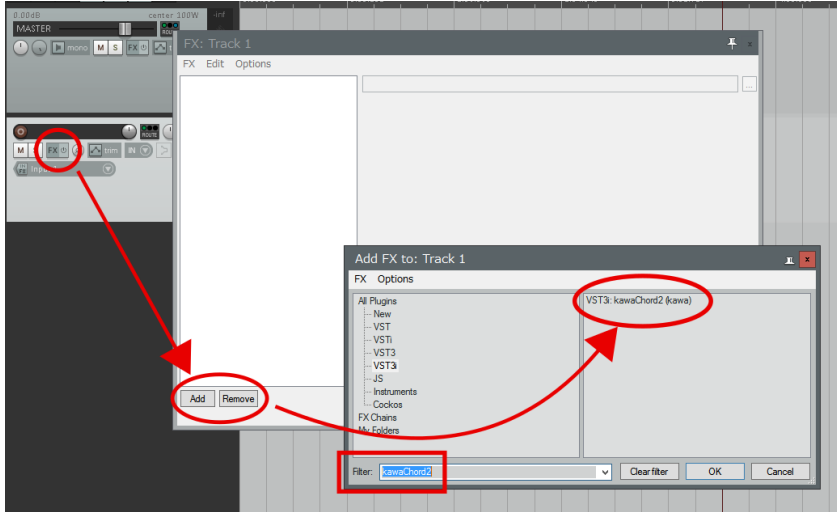
you can put MIDI items on tracks by dragging each Chord Name Buttons while pressing the "ModifierKey 1". (How to setting "ModifierKey 1", Please see ["Modifier Key Setting"](#) section.)



6. Quick Start for Reaper

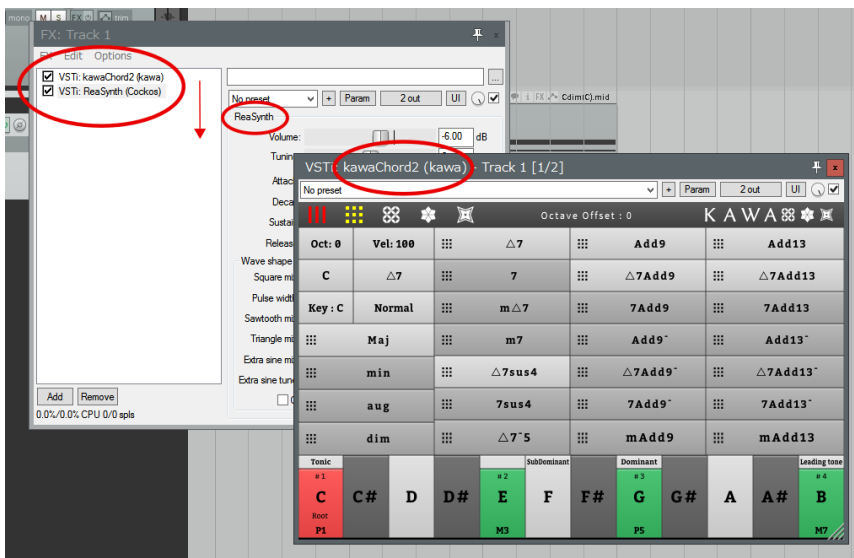
QuickStart guide of KawaChord on Reaper.

6.1 Load KawaChord 2



Create a track and press FX button to load KawaChord 2 plugin.

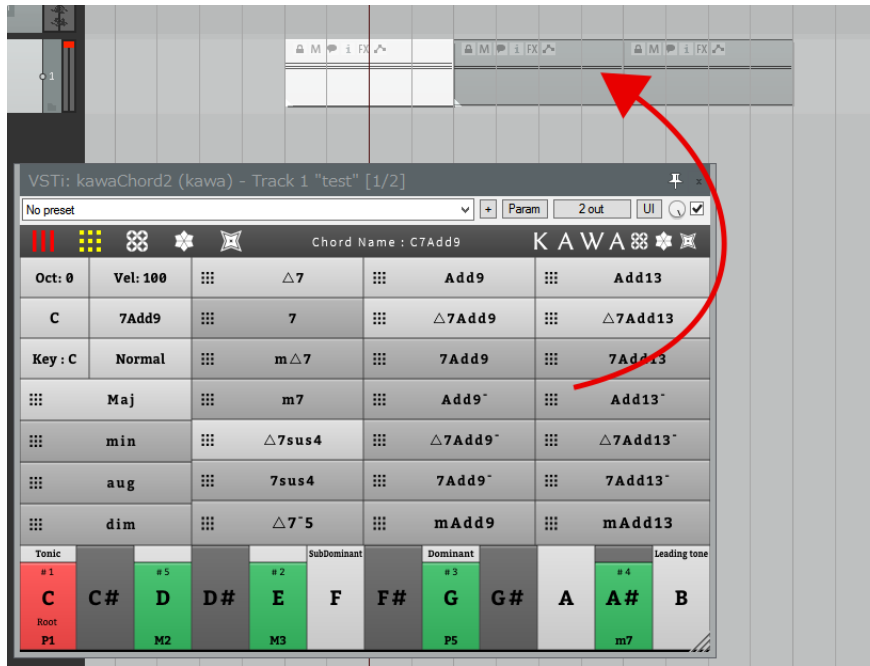
6.2 Load the synthesizer you want to use.



After loading KawaChord 2, load the synthesizer you want to use. Then, MIDI notes are sent from KawaChord 2 output to the synthesizer. (Loading KawaChord 2 is first, not the way around)

6.3 Placing As MIDI Clip Item

you can put MIDI items on tracks by dragging each Chord Name Buttons while pressing the "ModifierKey 1". (How to setting "ModifierKey 1", Please see ["Modifier Key Setting"](#) section.)



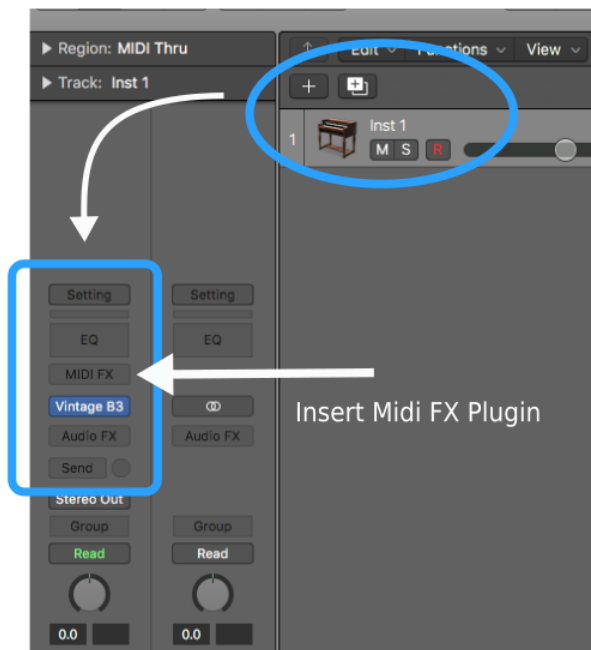
7. Quick Start for Logic (Mac OS X)

QuickStart guide of KawaChord on Logic (Mac OS X).

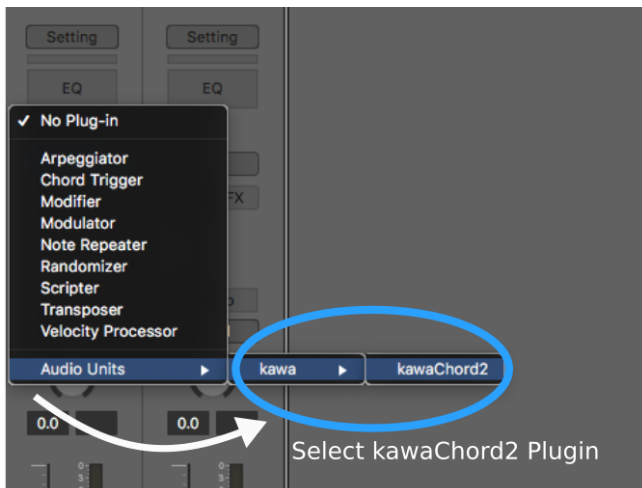
7.1 Load KawaChord 2 as Midi Effect Plugin.

kawaChord2 will work "Midi Effect Plugin" in Audio Units version. You need to add Instrument Track, and load kawaChord2 to "MIDI FX" on that Track.

※ AudioUnit Midi Effect plug-ins are not supported in many hosts, so if you are using other than Logic, I recommend using VST plug-in.



below Figure: when selecting kawaChord2 on MIDI-FX.



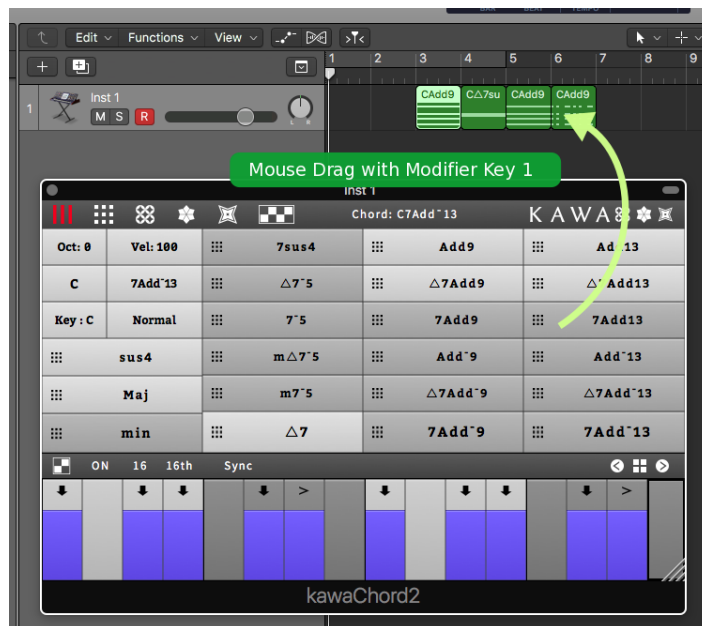
below Figure : when finished loading kawaChord2.



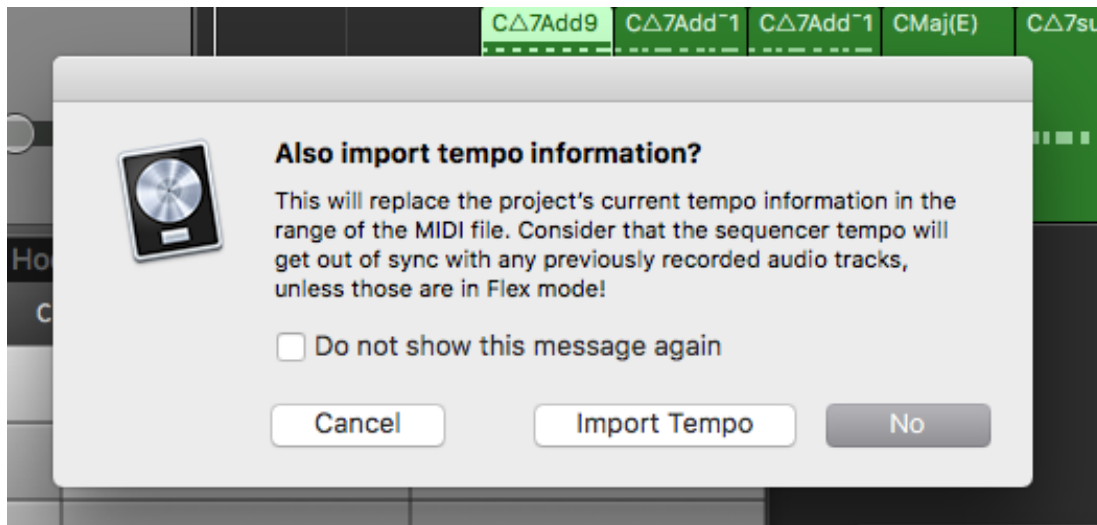
When using Logic standard software synthesizer, it seems that "MIDI FX effect" may not become active unless you play it once. If the sound is not played after loading, once you play it, you will hear the sound. (I am investigating in detail now.)

7.2 Placing As MIDI Clip Item

you can put MIDI items on tracks by dragging each Chord Name Buttons while pressing the "ModifierKey 1". (How to setting "ModifierKey 1", Please see ["Modifier Key Setting"](#) section.)



Depending on the setting when dragging to the track, A window as to whether to import Tempo Map is displayed. Since it can also be set not to display, please set as necessary.



Also, when you want to return to the original settings.

Preferences -> General -> Notification -> Reset Warnings

You can restore it by pressing the this button.

