

# KAWA CHORD 2

## Quick Start

### Index

1.How To install ( Windows ).....	2
1.1 Install the VST3 Plugin.....	2
Windows 64bit.....	2
Windows 32bit.....	2
1.2 Install the VST 2.4 Plugin.....	2
Windows 64bit.....	2
Windows 32bit.....	2
2.How To install ( Mac OSX ).....	3
2.1 How to Install the VST2.4 Plugin.....	3
2.2 How to Install the VST3 Plugin.....	3
3.How to License Activation.....	4
3.1 Generate Plugin Key.....	4
3.2 Register Plugin key to Kawa.works Account.....	4
3.3 Download License Key.....	5
3.4 Register LicenseKey to Plugin.....	5
4.Quick Start For Studio One.....	6
4.1 Loading kawaChord 2 plugin.....	6
4.2 Configure Midi send / receive setting.....	6
4.3 Plcaing As MIDI Clip Item.....	7
5.Quick Start BitWig Studio.....	8
5.1 Load KawaChord 2.....	8
5.2 Load the synthesizer you want to use.....	8
5.3 Plcaing As MIDI Clip Item.....	9
6.Quick Start for Reaper.....	10
6.1 load KawaChord 2.....	10
6.2 Load the synthesizer you want to use.....	10
6.3 Plcaing As MIDI Clip Item.....	11

## 1. How To install ( Windows )

---

KawaChord 2 has not have Installer. You have need self install with move "kawachord 2 plugin file " to VST plugin folder.

### 1.1 Install the VST3 Plugin

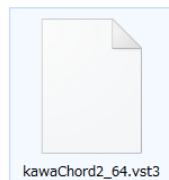
#### Windows 64bit

Move **kawaChord2\_64.vst3** (Free version is **kawaChord2\_Free\_64.vst3** ) to C:\Program Files\Common Files\VST3\kawaChord2 64.vst3 directory.

#### Windows 32bit

Move **kawaChord2\_32.vst3** ( Free version is **kawaChord2\_Free\_32.vst3** ) to C:\Program Files (x86)\Common Files\VST3\kawaChord2 64.vst3 directory.

※ if you using windows 32bit OS, move to C:\Program Files\Common Files\VST3\kawaChord2 64.vst3 directory.



Move To "VST3" Folder

### 1.2 Install the VST 2.4 Plugin

#### Windows 64bit

Move **kawaChord2\_vst2\_64.dll** (Free version is **kawaChord2\_vst2\_Free\_64.dll**) to vstPlugins Folder that was settinged each Daw soft.

#### Windows 32bit

Move **kawaChord2\_vst2\_Free\_32.dll** (Free version is **kawaChord2\_vst2\_Free\_32.dll**) to vstPlugins Folder that was settinged each Daw soft.

※ One of the Example , "vstplugins" folder is C:\Program Files (x86)\VSTPlugins.

## 2. How To install ( Mac OSX )

---

KawaChord 2 doesn't have its Installer. For the installation, you need to move "KawaChord 2 plugin file" to VST folder manually

### 2.1 How to Install the VST2.4 Plugin.

Move **kawaChord2-MacOSX.vst** (Free version is **kawaChord2-MacOSX-Free.vst** ) to ~/Library/Audio/Plug-Ins/VST directory. ( or Macintosh HD/Library/Audio/Plug-Ins/VST directory)

### 2.2 How to Install the VST3 Plugin.

Move **kawaChord2-MacOSX.vst3** (Free version is **kawaChord2-MacOSX-Free.vst3** ) to ~/Library/Audio/Plug-Ins/VST3 directory. (or Macintosh HD/Library/Audio/Plug-Ins/VST3 directory)

※ How to Show User Library folder:

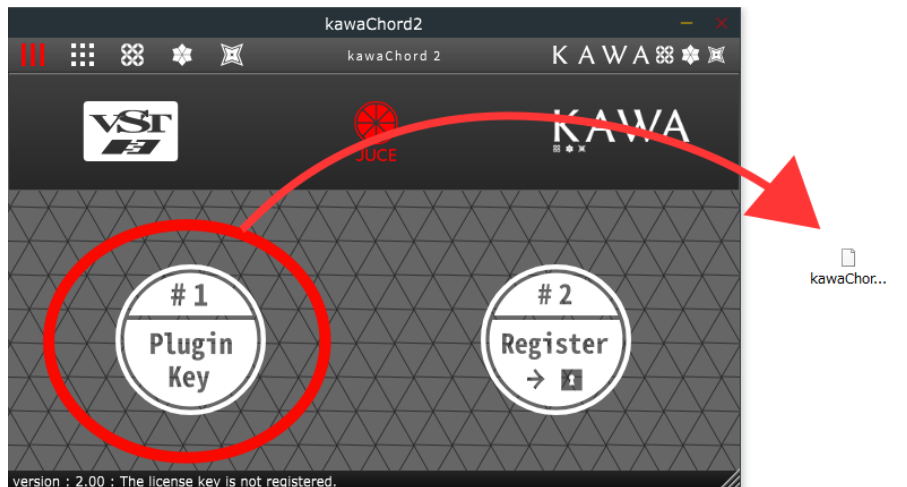
1. Hold down the **Option key** and open the **Go** menu in the Finder.
2. Select **Library** from the list of places.



### 3. How to License Activation

For using "kawaChord 2", You have need License Activation.this section will explain How to License activation.

#### 3.1 Generate Plugin Key



When you start kawaChord for the first time, it notice license activation.  
And Generate "PluginKey" by "the Left button" clicked .

#### 3.2 Register Plugin key to Kawa.works Account.

KAWA CHORD 2

- Account Dashboard
- Account Information
- Address Book
- My Downloadable Products**
- My Orders
- Stored Payment Methods
- Billing Agreements
- My Product Reviews

Order #	Date	Title	Status	Remaining Downloads
170516-151340f	May 16, 2017	kawaChord2-Free-windows <a href="#">Download</a>	Available	Unlimited
		<div style="display: flex; justify-content: space-between; align-items: center;"> <div> <a href="#">ファイルを選択</a> </div> <div>選択されていません</div> <div> <a href="#">Register Plugin Key</a> </div> </div>	Remaining Register Count 3	
170516-11253ba	May 16, 2017	kawaChord2-Free-windows <a href="#">Download</a>	Available	Unlimited
		<div style="text-align: center;"> <a href="#">Download License Key</a> </div>	Remaining Register Count 0	

You can License Activation in "My Downloadable Products" in your kawa.works Account.  
For get "License Key" , you need to Register "Plugin key" that was generated kawaChord.

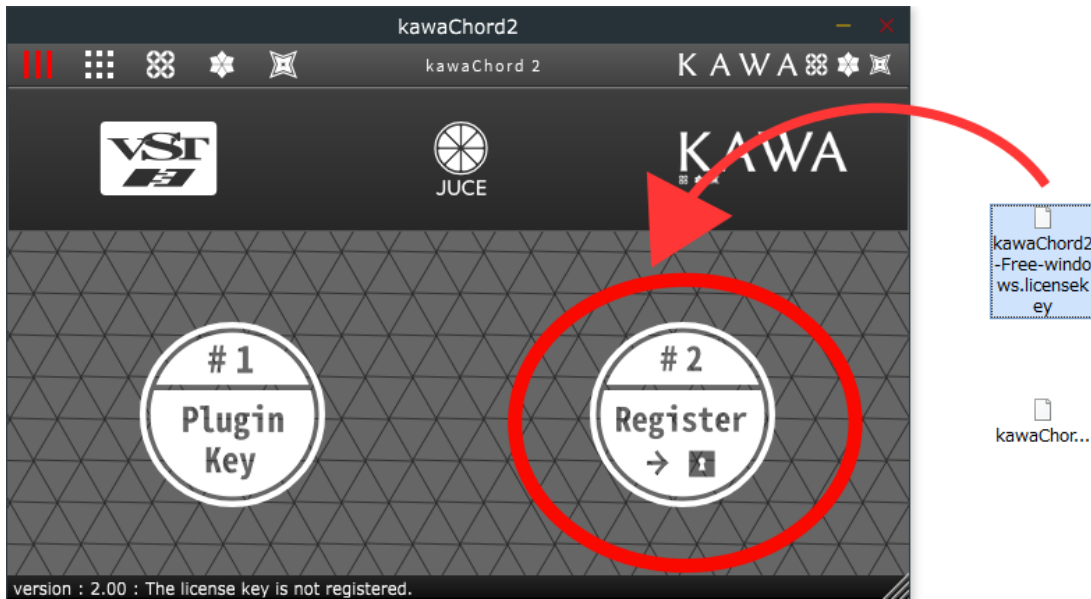
### 3.3 Download License Key

Order #	Date	Title	Status	Remaining Downloads
170516-151340f	May 16, 2017	kawaChord2-Free-windows <a href="#">Download</a>	Available	Unlimited
		<a href="#">Download License Key</a>	<a href="#">Remove License Key</a>	Remaining Register Count 2
170516-11253ba	May 16, 2017	kawaChord2-Free-windows <a href="#">Download</a>	Available	Unlimited
		<a href="#">Download License Key</a>		Remaining Register Count 0

2 Item(s)

If the Plugin key is correct, you can download the License Key.

### 3.4 Register LicenseKey to Plugin.



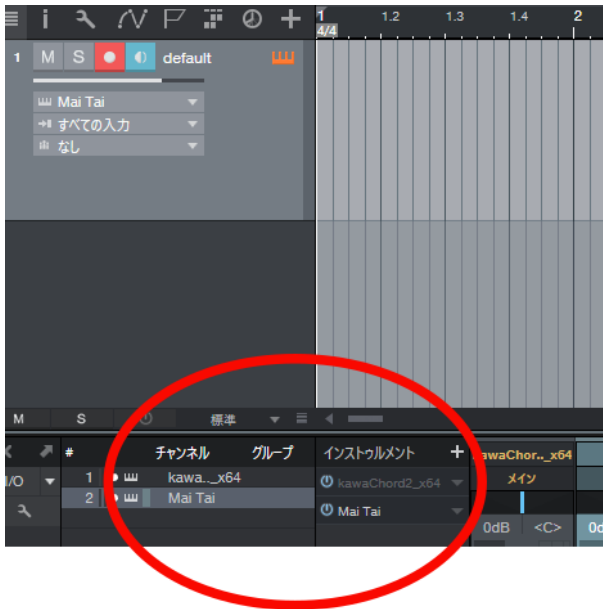
Register the downloaded license key in the plug-in using the "Register button" on the right. Once registration is complete, you can use the kawaChord Plugin.

※ VST 2.4 plug-in, VST 3 plug-in Acceptation is required accordingly, but you can use the same license key.

## 4. Quick Start For Studio One

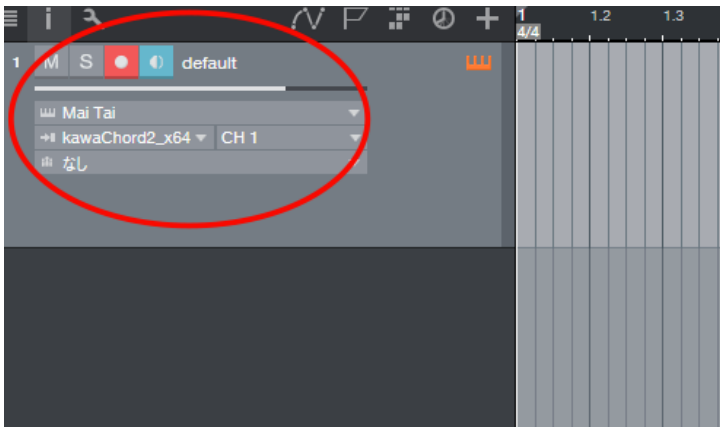
The Quick explain at using with Studio One.

### 4.1 Loading kawaChord 2 plugin



[img] when loading “kawaChord 2” and “Studio One MaiTai” synthesizer.

### 4.2 Configure Midi send / receive setting.



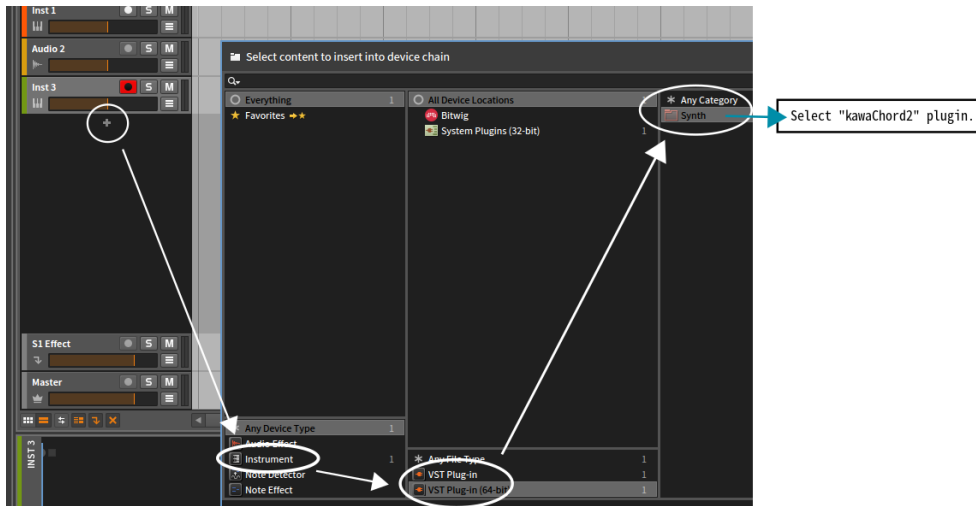
Select MaiTai synthesizer’s input MIDI source as kawaChord2. and MaiTai was assigned Midi Send of kawaChord2 , Maitai can recive MIDI note from kawaChord2.



## 5. Quick Start BitWig Studio

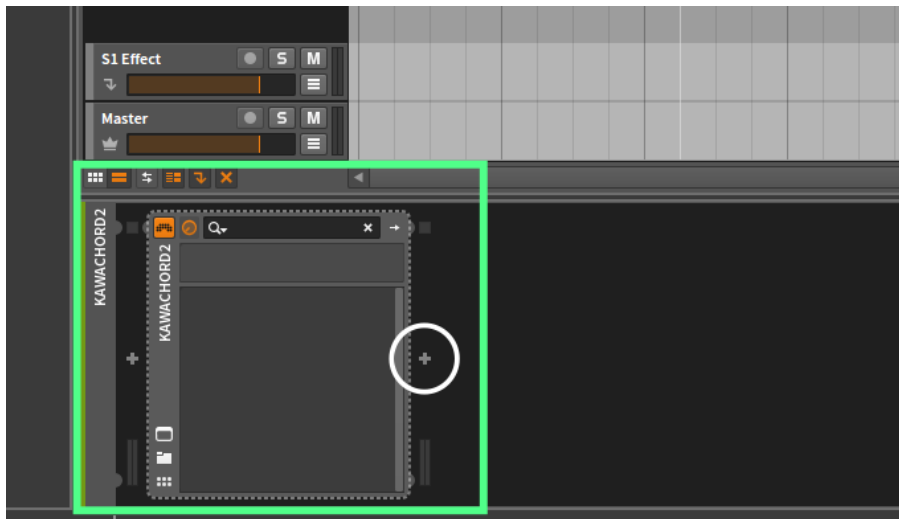
The Quick explain at using with BitWig Studio.

### 5.1 Load KawaChord 2



press "+" button below the track and then select "Instrument"→"VST plugin(64 bit)"→"KawaChord 2."

### 5.2 Load the synthesizer you want to use.



Click the right side of KawaChord 2 "+" and then select an instrument as a MIDI notes' output destination.

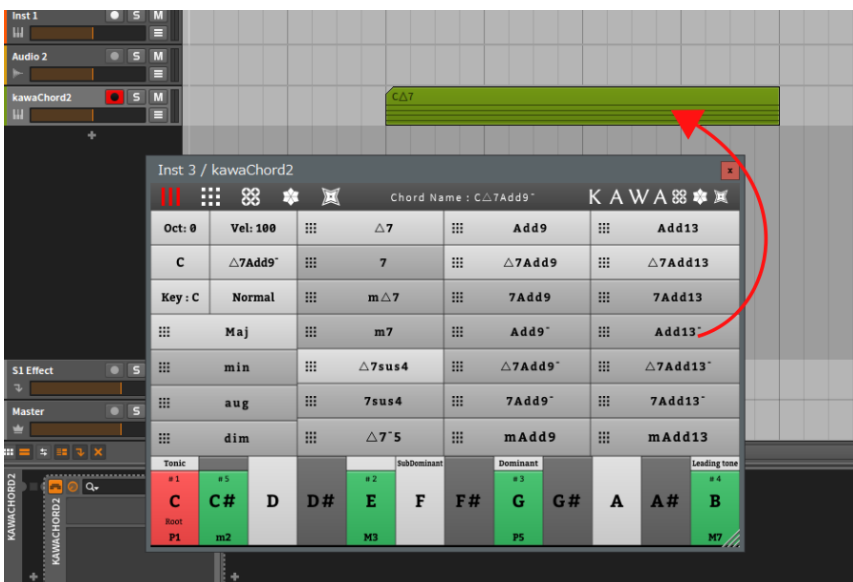




The pic: Bitwig FM4 Synthesizer is assigned as a MIDI notes output destination. With that, the FM Synthesizer sounds when KawaChord 2's Chord Name Buttons are clicked.

### 5.3 Placing As MIDI Clip Item

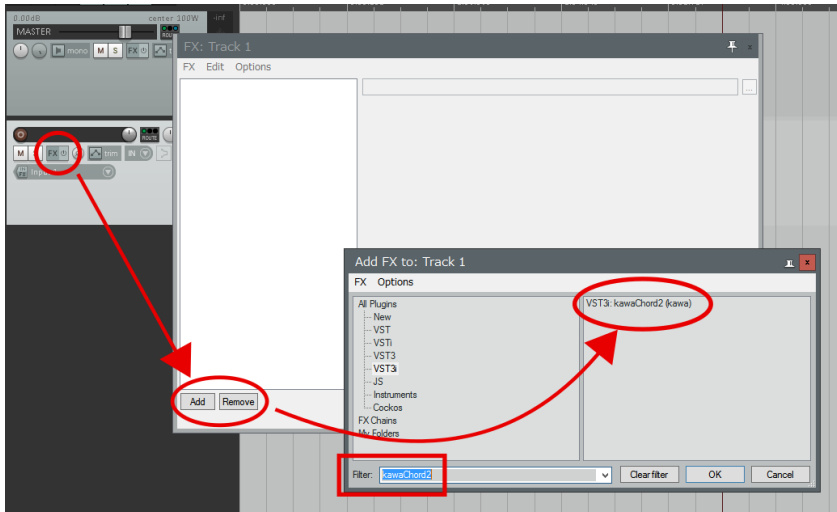
you can put MIDI items on tracks by dragging each Chord Name Buttons while pressing the "ctrl" key.



## 6. Quick Start for Reaper

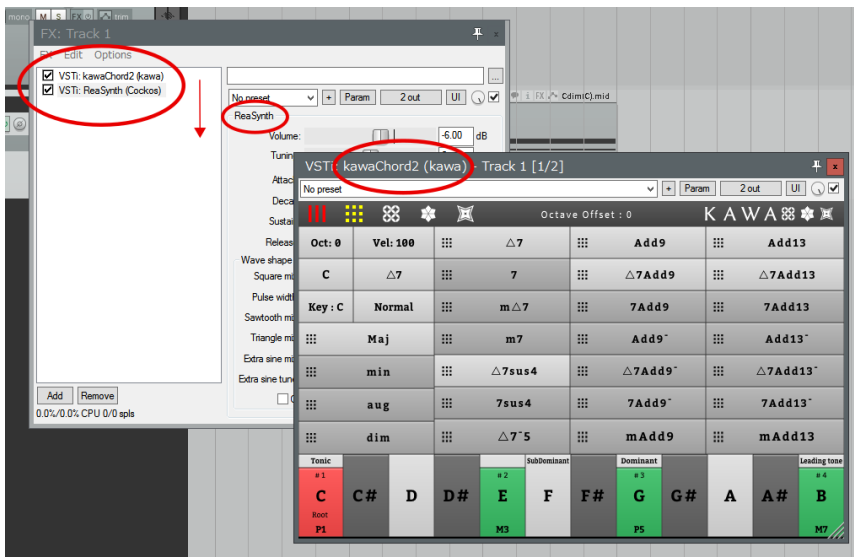
The Quick explain at using with Reaper.

### 6.1 load KawaChord 2



Create a track and press FX button to load KawaChord 2 plugin.

### 6.2 Load the synthesizer you want to use.



After loading KawaChord 2, load the synthesizer you want to use. Then, MIDI notes are sent from KawaChord 2 output to the synthesizer. (Loading KawaChord 2 is first, not the way around)

### 6.3 Placing As MIDI Clip Item

you can put MIDI items on tracks by dragging each Chord Name Buttons while pressing the "**ctrl**" key.

